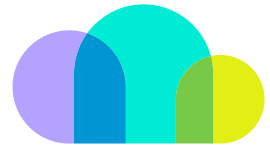




Microsoft
Partner
 Microsoft

Azure
Expert
MSP



Cloud Service Azure Checkup



Azure Checkup

SoftwareOne's Azure Checkup helps you find out what's important in your cloud infrastructure, what's working well, and what needs attention. It provides insights into the cost, usage, performance, security and compliance of your Azure infrastructure. In doing so, it is based on a variety of checks performed, including: FinOps

- Security
- Compute
- Data
- Identity
- Network
- Storage
- DevOps
- Operational Excellence

Overview of the work packages / service description

SoftwareOne proposes to divide the project into the following work packages.

Description	Azure Checkup
Starting position and objective	Execution of an Azure Checkup to determine the maturity level of the Azure infrastructure at the customer with subsequent presentation of the optimization options and visualization of the results by means of scoring
Scope	<p>The Azure Checkup is performed by experienced Azure consultants and consists of a variety of checks. The following activities are part of SoftwareOne's Azure Checkup:</p> <ul style="list-style-type: none">• Survey of the current status by reviewing the existing environment through automated and manually performed checks or together with the customer by means of interviews• Evaluation of the surveyed as-is status against SoftwareOne and Microsoft best practices with regard to: Governance und Compliance<ul style="list-style-type: none">• Compute, Storage and Network• Security• FinOps / Costs• Operational Excellence (Availability, Resiliency and Continuity)• Creation of a result report
Participation and delimitations	<ul style="list-style-type: none">• The Checkup takes place remotely.• SoftwareOne works with Office365 and can therefore provide Teams sessions. Alternatively, the customer must provide another way to collaborate.• The necessary contact persons are available to process the checks in interview form.• The customer provides two user accounts to perform the Checkup (usually by inviting guest accounts in Entra ID) and grants these accounts unlimited reader rights to its entire environment (alternatively only to the shares to be considered). This applies to both Azure using RBAC roles ("Reader" + "Reservation Reader") and Entra ID ("Global Reader").• The customer's environment must be accessible from SoftwareOne's workstations.• After completion of the Checkup, the customer provides feedback (informal, written) on the Checkup within 30 days.• Azure Checkup does not include SaaS services, Marketplace products, Microsoft 365 products, Windows, or Linux Server services.• Third-party solutions are exempt from the Checkup.• There is no examination of legal facts.• There is no verification of existing or required licenses.• There is no implementation of the recommendations / optimizations in the customer environment (this can be offered and commissioned separately afterwards).

Description	Azure Checkup
Result	<ul style="list-style-type: none">Standardized HTML report with detailed results and expert recommendationsScoring evaluationThe “Top 10 checks” with the greatest need for action are highlighted separately, as are some “quick wins”Provision of the report for internal reviewPresentation of the results and definition of the next steps

Cost Overview

Pos.	Quantity	Unit	Description	Currency	Unit price	Total price
1		Flat Rate	Execution Azure CheckUp	EUR	12,500	12,500
	Net amount plus VAT - via Remote -					12,500

The Checkup is completed and accepted when the report has been provided and the results presented.

CONTACT US
TODAY

Find out more at
www.softwareone.com

DE
phone: +49 3412568 000
email: info.de@softwareone.com

AT
phone: +43 1878 10 0
email: info.at@softwareone.com

CH
phone: +41 844 44 55 44
email: info.ch@softwareone.com



Copyright © 2025 by SoftwareOne AG, Riedenmatt 4, CH-6370 Stans. All rights reserved. SoftwareOne is a registered trademark of SoftwareOne AG. All other trademarks are the property of their respective owners. SoftwareOne shall not be liable for any error in this document. Liability for damages directly and indirectly associated with the supply or use of this document is excluded as far as legally permissible. © Imagery by: Adobe Stock and Getty Images.